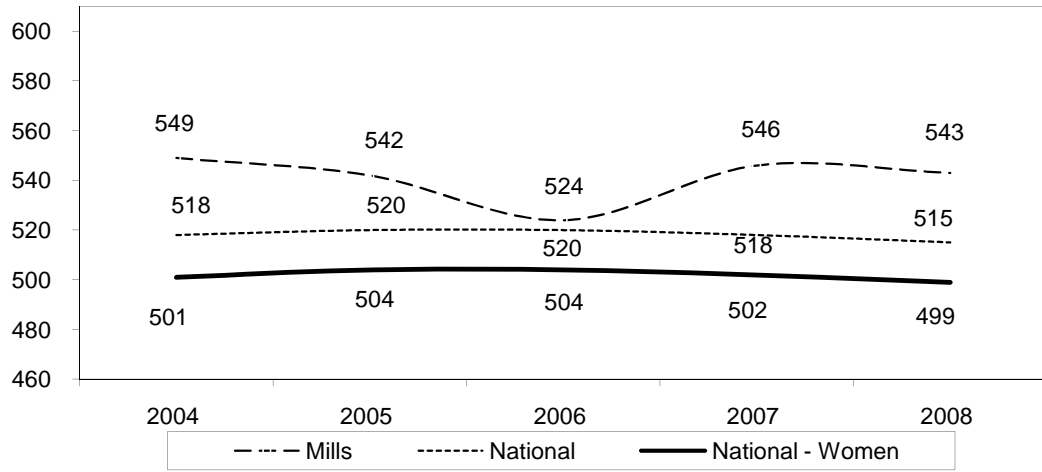


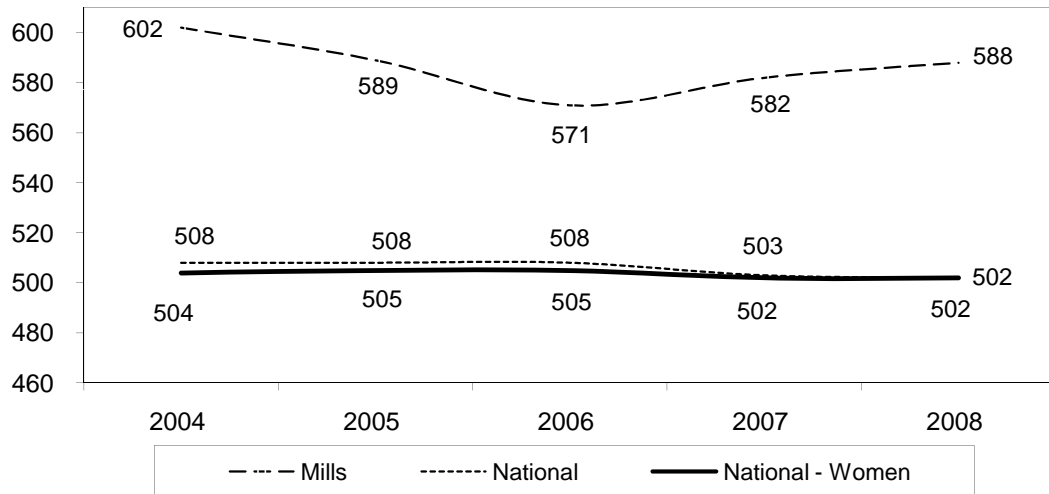
**1.2 PREPARATION/SELECTIVITY LEVELS OF ENTERING UNDERGRADUATES  
(DATA REPORTED FOR FALL TERMS)**

**SAT SCORES FOR ENTERING FIRST-YEARS**

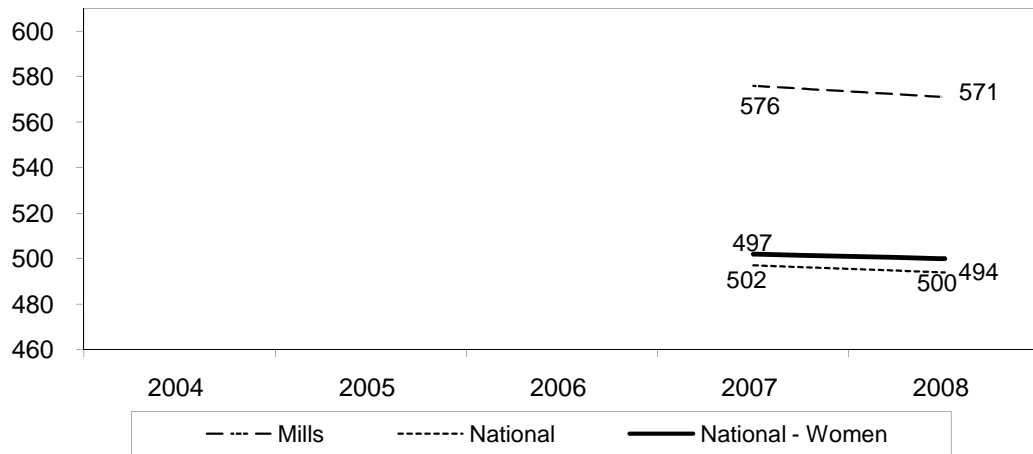
**QUANTITATIVE**



**VERBAL**



**WRITING**



**1.2 PREPARATION/SELECTIVITY LEVELS OF ENTERING UNDERGRADUATES (CONT.)**  
(DATA REPORTED FOR FALL TERMS)

**SCORES FOR MID 50%**

Percentile	2004	2005	2006	2007	2008
<b>Verbal</b>					
25%	540	520	500	520	520
75%	670	660	640	640	650
<b>Math</b>					
25%	490	490	470	490	490
75%	610	600	590	610	590
<b>Combined</b>					
25%	1030	1010	970	1010	1010
75%	1280	1260	1230	1250	1240

**HIGH SCHOOL GPA**

